

Superior Clamping and Gripping



## Product Information

Long-stroke gripper PSH

**Compact. Flexible. Fully encapsulated.**

## Long-stroke gripper PSH

2-finger parallel gripper with long jaw stroke and dirt-resistant round guidance

### Field of application

in contaminated work environments and for a large parts spectrum



### Advantages – Your benefits

**High maximum moments possible** suitable for using long gripper fingers

**Dirt-protected round guidances** sealed, for long strokes

**Fastening at two gripper sides with centering** for universal and flexible gripper assembly

**Air supply via hose-free direct connection or screw connections** for flexible pressure supply in all automated systems

**Comprehensive sensor accessory program** for versatile querying possibilities and stroke position monitoring



Sizes  
Quantity: 4



Weight  
0.77 .. 8.05 kg



Gripping force  
320 .. 1760 N



Stroke per jaw  
14 .. 100 mm



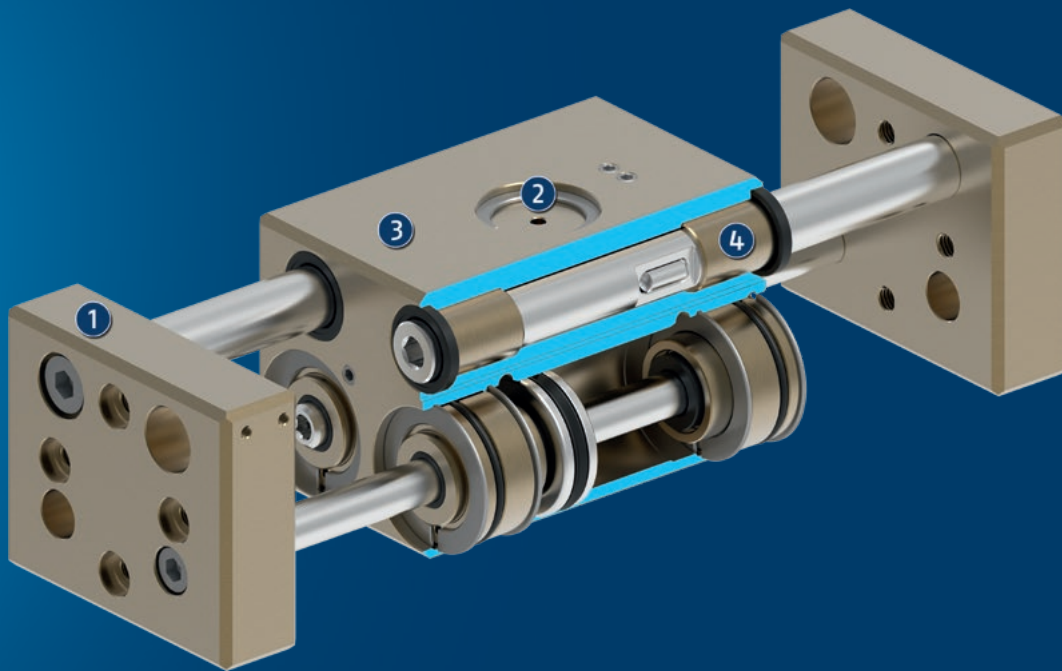
Workpiece weight  
1.6 .. 8.8 kg

## Functional description

By actuating the pistons with compressed air, the base jaws, which are located at the piston and the rack, are moved.

The jaw stroke is synchronized by means of rack and

pinion kinematics.



① **Base Jaw**  
for the connection of workpiece-specific gripper fingers

② **Kinematics**  
Rack and pinion principle for centric gripping

③ **Housing**  
is weight-optimized due to the use of high-strength aluminum alloy

④ **Round guidances**  
sealed, for long strokes

## General notes about the series

**Operating principle:** Rack and pinion principle

**Housing material:** hard-anodized, high strength aluminum

**Base jaw material:** hard-anodized, high strength aluminum

**Actuation:** pneumatic, with filtered compressed air as per ISO 8573-1:2010 [7:4:4].

**Warranty:** 24 months

**Scope of delivery:** Centering sleeves, O-rings for direct connection, assembly instructions (operating manual with declaration of incorporation is available online)

**Gripping force maintenance device:** possible with pressure maintenance valve SDV-P

**Gripping force:** is the arithmetic sum of the individual force applied to each jaw at distance P (see illustration).

**Finger length:** is measured from the reference surface as the distance P in direction to the main axis.

The maximum permissible finger length applies until the nominal operating pressure is achieved. With higher pressures, the finger length must be reduced proportionally to the nominal operating pressure.

**Repeat accuracy:** is defined as a distribution of the end Position for 100 consecutive strokes.

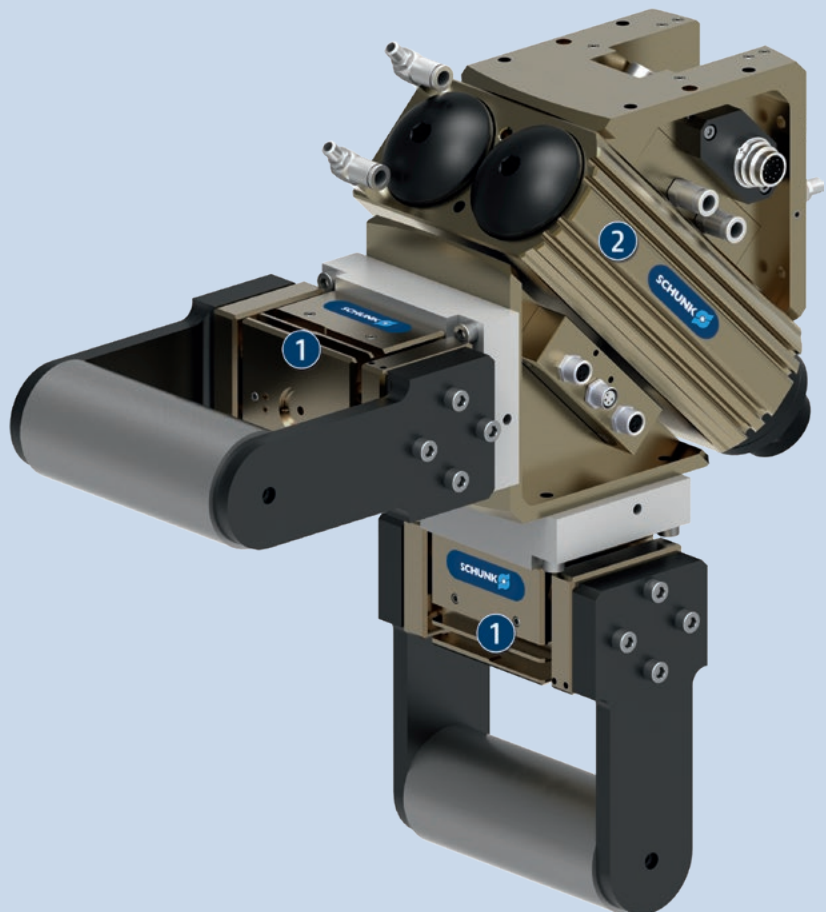
**Workpiece weight:** is calculated for force-fit gripping with a coefficient of static friction of 0.1 and a safety factor of 2 against workpiece slippage at acceleration due to gravity g. For form-fit or capture gripping, there are significantly higher permissible workpiece weights.

**Closing and opening times:** are purely the times that the base jaws or fingers are in motion. Valve switching times, hose fill times, or PLC reaction times are not included, and are to be considered when cycle times are calculated.

## Application example

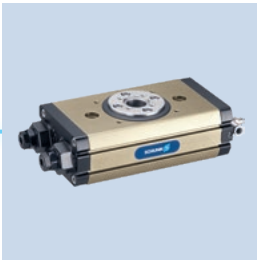
Rapid loading and unloading unit on a swivel head base. Due to the robustness of this unit, it is particularly suitable for use in machine tools.

- ❶ 2-finger parallel gripper PSH
- ❷ Swivel head SRH-plus



## SCHUNK offers more ...

The following components make the product even more productive – the suitable addition for the highest functionality, flexibility, reliability, and controlled production.



Universal swivel unit



Quick change system



Tolerance compensation unit



Pressure maintenance valve



Magnetic switches



Finger blank



Intermediate jaw



Jaw quick-change system



Inductive proximity switches

① For more information on these products can be found on the following product pages or at [schunk.com](http://schunk.com).

## Options and special information

**Finger position:** can be monitored by magnetic and/or inductive proximity switches. Unsynchronized version possible upon request as application-specific design.

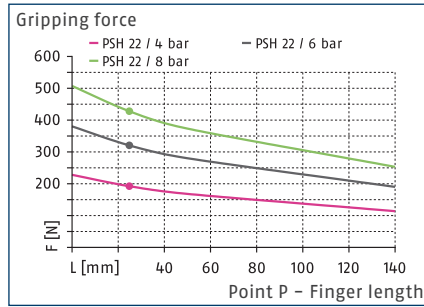
**High-temperature version V/HT:** for use in hot environments

**ATEX version EX:** for explosive environments

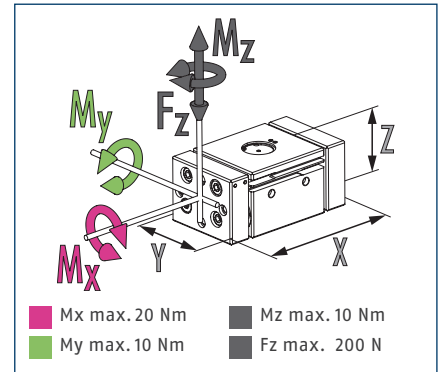
**Additional versions:** Various options can be combined with each other. Numerous additional options are also available – just tell us what your task is!



### Gripping force



### Dimensions and maximum loads



① The indicated moments and forces are static values, apply for each base jaw and may appear simultaneously. Loads may additionally occur to the moment produced by the gripping force itself.

### Technical data

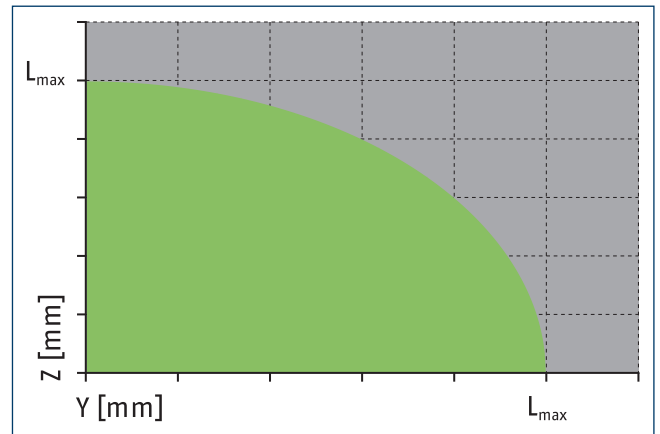
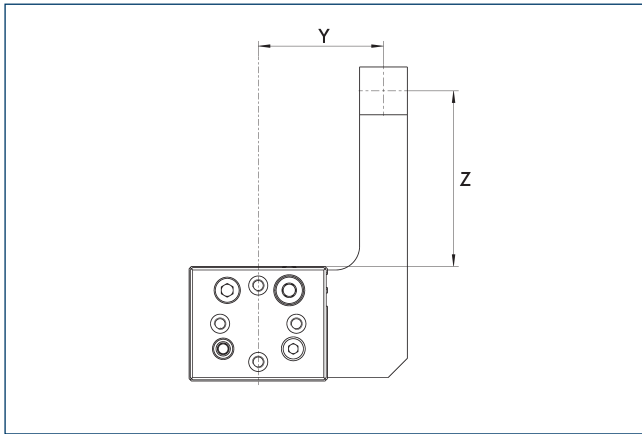
Description		PSH 22-1	PSH 22-2
ID		0302122	0302123
Stroke per jaw	[mm]	28	14
Closing/opening force	[N]	320/320	320/320
Weight	[kg]	0.95	0.77
Recommended workpiece weight	[kg]	1.6	1.6
Fluid consumption double stroke	[cm³]	36	18
Min./nom./max. operating pressure	[bar]	3/6/8	3/6/8
Closing/opening time	[s]	0.15/0.15	0.12/0.12
Max. permissible finger length	[mm]	140	140
Max. permissible mass per finger	[kg]	0.8	0.8
IP protection class		67	67
Min./max. ambient temperature	[°C]	5/90	5/90
Repeat accuracy	[mm]	0.1	0.1
Dimensions X x Y x Z	[mm]	137 x 58 x 48	95 x 58 x 48
<b>Options and their characteristics</b>			
High-temperature version		39302122	39302123
Min./max. ambient temperature	[°C]	5/130	5/130

① It may take a few 100 gripping cycles until the full gripping force (as indicated in the data table) will be available.

[illegible]

91) MMS 30... sensor

### Maximum permitted finger projection

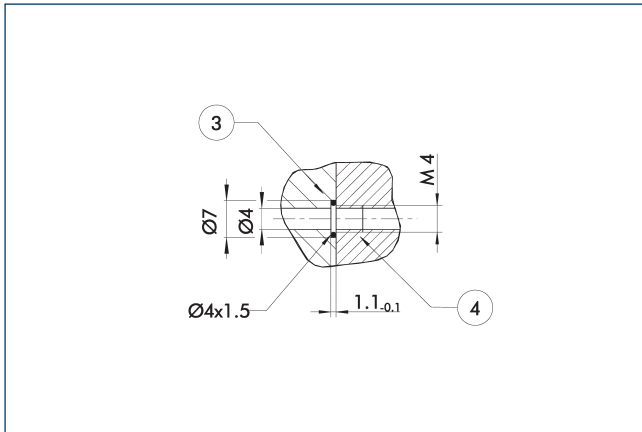


■ Permitted range

■ Inadmissible range

Lmax is equivalent to the maximum permitted finger length, see the technical data table.

### Hose-free direct connection M4

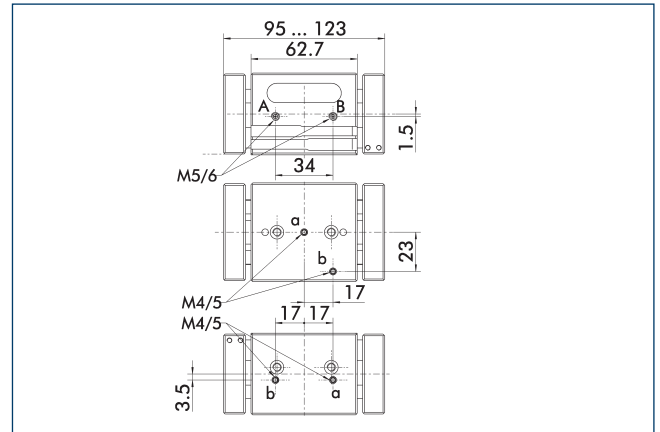


### ③ Adapter

#### ④ Grippers

The direct connection is used for supplying compressed air without hoses. Instead, the pressure medium is fed through bore-holes in the mounting plate.

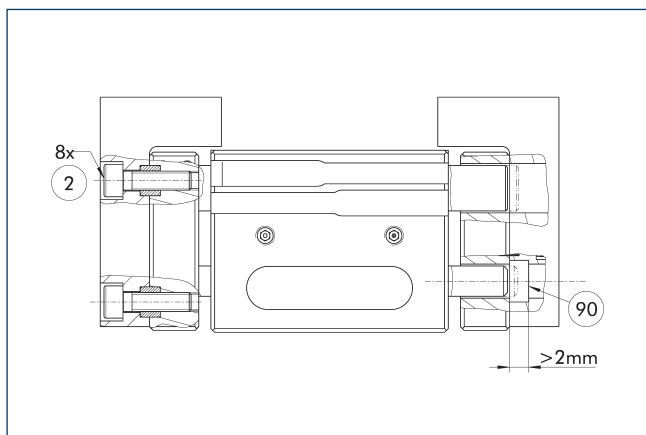
### Stroke variant PSH 22-2



The drawing shows changes in dimensions of the version with a different stroke compared to the version shown in the main view.



## Finger design

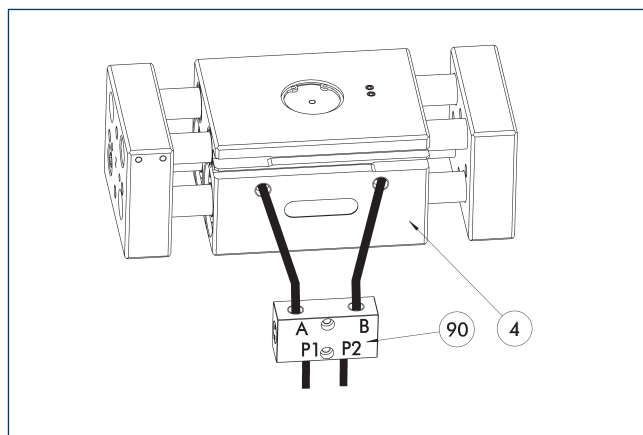


② Finger connection

⑨⑩ Recess

When closing the gripper completely, the piston rod can project beyond the end. If the entire closing stroke is required in the application, the recess is essential.

## SDV-P pressure maintenance valve



④ Grippers

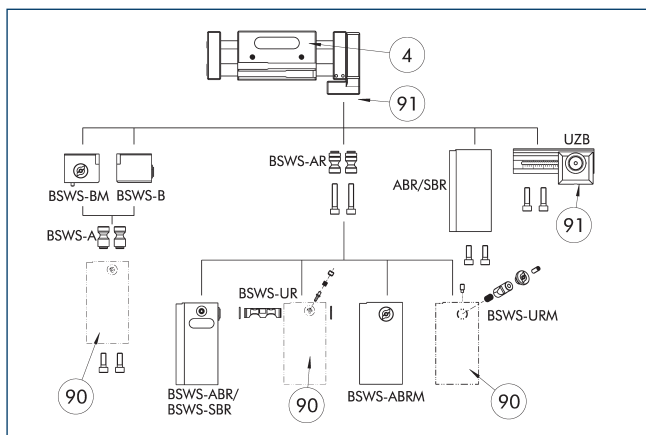
⑨⑩ SDV-P pressure maintenance valve

The SDV-P pressure maintenance valve ensures in emergency STOP situations that the pressure in the piston chamber of pneumatic gripper, swivel, linear, and quick-change modules is temporarily maintained.

Description	ID	Recommended hose diameter [mm]
Pressure maintenance valve		
SDV-P 04	0403130	6
Pressure maintenance valve with air bleed screw		
SDV-P 04-E	0300120	6

① In order to achieve the specified closing and opening time for each gripper variant, the recommended hose diameter must be used. The direct allocation of the respective variant of the gripper for the respective SDV-P can be found at [schunk.com](http://schunk.com).

## Intermediate jaw interface



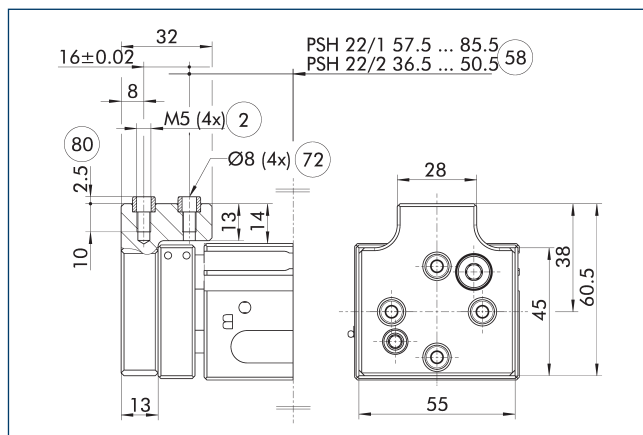
④ Grippers

⑨⑩ Customized gripper fingers

⑨⑩ Uniform screw connection pattern

By using the intermediate jaw, you have the possibility of directly connecting a wide range of accessories directly. This includes jaw quick-change systems, finger blanks, and universal intermediate jaws.

## ZBA PSH 22-80 intermediate jaw



② Finger connection

⑦② Fit for centering sleeves

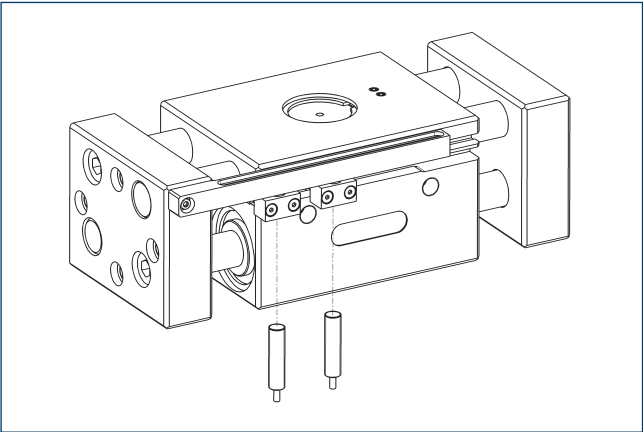
⑤⑧ Distance from center of gripper

⑧⑩ Depth of the centering sleeve hole in the counter part

Optionally intermediate jaws can be used, enabling direct connection and alignment of top jaws and various standard accessories in Z-direction.

Description	ID	Material	Finger interface	Scope of delivery
Intermediate jaw				
ZBA-PSH-22-80	0300225	Aluminum	PGN-plus 80 2	

Inductive Proximity Switches

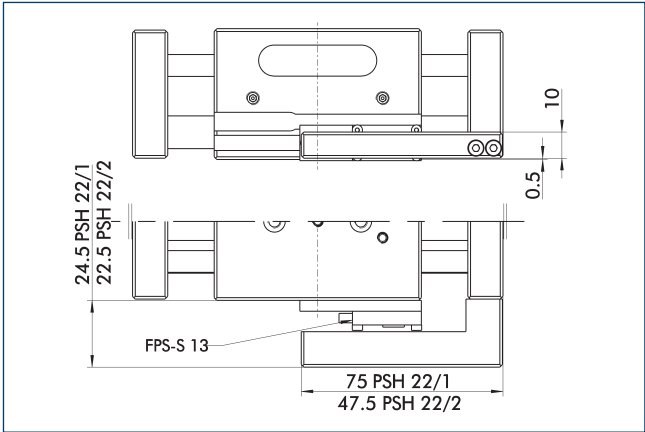


End position monitoring can be mounted with an attachment kit.

Description	ID	Often combined
Attachment kit for proximity switch		
HG-PSH 22-1	0300754	
HG-PSH 22-2	0300755	
Inductive proximity switches		
IN 80-S-M12	0301578	
IN 80-S-M8	0301478	●
IN-C 80-S-M8-PNP	0301475	
INK 80-S	0301550	
INK 80-SL	0301579	

- ❗ Two sensors (closer/S) are required for each unit and extension cables are available as an option. This attachment kit needs to be ordered optionally as an accessory. For sensor cables, note the minimum permissible bending radii. These are generally 35 mm.

Attachment kit for FPS

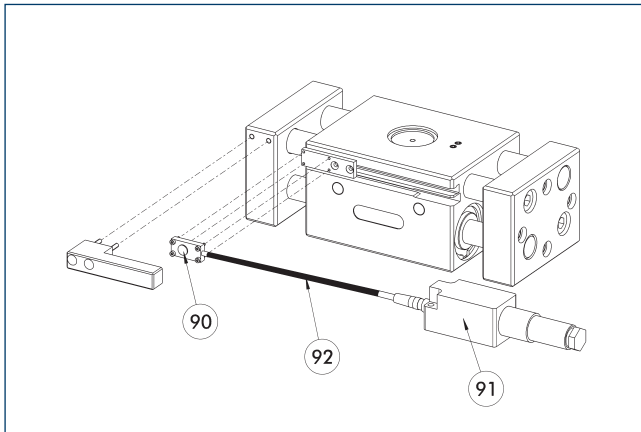


The following FPS position sensor can differentiate between five programmable areas or switching points for the stroke of a gripper, and can be used in connection with a PC as a measuring system.

Description	ID	
Attachment kit for FPS		
AS-FPS-PSH 22-1	0301736	
AS-FPS-PSH 22-2	0301737	

- ❗ This attachment kit needs to be ordered optionally as an accessory.

## Flexible position sensor



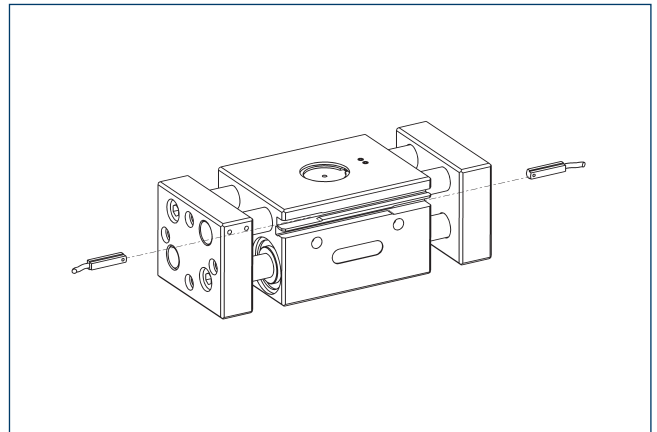
- 90 FPS-S sensor      92 Cable extension  
 91 FPS-F5 evaluation electronic

Flexible position monitoring of up to five positions.

Description	ID	Often combined
Attachment kit for FPS		
AS-FPS-PSH 22-1	0301736	
AS-FPS-PSH 22-2	0301737	
Sensor		
FPS-S 13	0301705	
Evaluation electronics		
FPS-F5	0301805	●
Cable extension		
KV BG08-SG08 3P-0050	0301598	
KV BG08-SG08 3P-0100	0301599	

- ① When using an FPS system, an FPS sensor (FPS-S) as well as an electronic processor (FPS-F5 / F5 T) are required for each gripper as well as a mounting kit (AS), if listed. Cable extensions (KV) are optionally available – see catalog chapter "Accessories."

## Electronic magnetic switch MMS



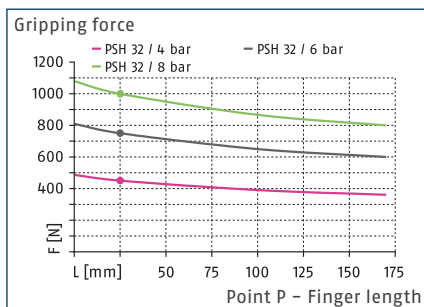
End position monitoring for mounting in the T-slot

Description	ID	Often combined
Electronic magnetic switch		
MMS 30-S-M12-PNP	0301571	
MMS 30-S-M8-PNP	0301471	●
MMSK 30-S-PNP	0301563	
Connection cables		
KA BG08-L 3P-0300-PNP	0301622	●
KA BG08-L 3P-0500-PNP	0301623	
KA BG12-L 3P-0500-PNP	30016369	
KA BW08-L 3P-0300-PNP	0301594	
KA BW08-L 3P-0500-PNP	0301502	
clip for plug/socket		
CLI-M12	0301464	
CLI-M8	0301463	
Cable extension		
KV BG12-SG12 3P-0030-PNP	0301999	
KV BG12-SG12 3P-0060-PNP	0301998	
KV BW08-SG08 3P-0030-PNP	0301495	
KV BW08-SG08 3P-0100-PNP	0301496	
KV BW08-SG08 3P-0200-PNP	0301497	●
KV BW12-SG12 3P-0030-PNP	0301595	
KV BW12-SG12 3P-0100-PNP	0301596	
KV BW12-SG12 3P-0200-PNP	0301597	
Sensor distributor		
V2-M8	0301775	●
V4-M8	0301746	
V8-M8	0301751	

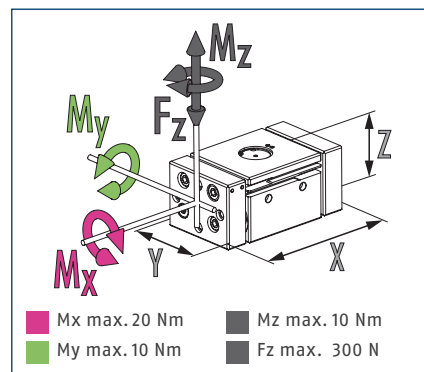
- ① Two sensors are required per unit for monitoring two positions. On option, extension cables and sensor distributors are available. Additional product variants of the sensor, and further information and technical data can be found in the catalog chapter sensor system.



### Gripping force



### Dimensions and maximum loads



① The indicated moments and forces are statical values, apply for each base jaw and may appear simultaneously. Loads may additionally occur to the moment produced by the gripping force itself.

### Technical data

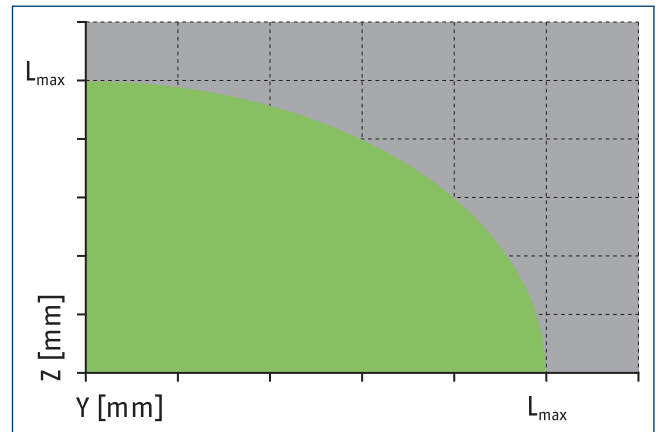
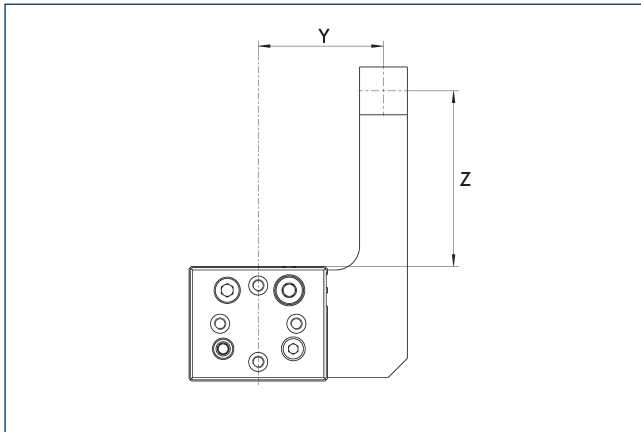
Description		PSH 32-1	PSH 32-2
ID		0302132	0302133
Stroke per jaw	[mm]	35	22.5
Closing/opening force	[N]	750/750	750/750
Weight	[kg]	2.05	1.8
Recommended workpiece weight	[kg]	3.75	3.75
Fluid consumption double stroke	[cm³]	101	65
Min./nom./max. operating pressure	[bar]	3/6/8	3/6/8
Closing/opening time	[s]	0.2/0.2	0.12/0.12
Max. permissible finger length	[mm]	170	170
Max. permissible mass per finger	[kg]	1.5	1.5
IP protection class		67	67
Min./max. ambient temperature	[°C]	5/90	5/90
Repeat accuracy	[mm]	0.1	0.1
Dimensions X x Y x Z	[mm]	171 x 76 x 63	133 x 76 x 63
<b>Options and their characteristics</b>			
High-temperature version		39302132	39302133
Min./max. ambient temperature	[°C]	5/130	5/130

① It may take a few 100 gripping cycles until the full gripping force (as indicated in the data table) will be available.

[illegible]

91) MMS 30... sensor

### Maximum permitted finger projection

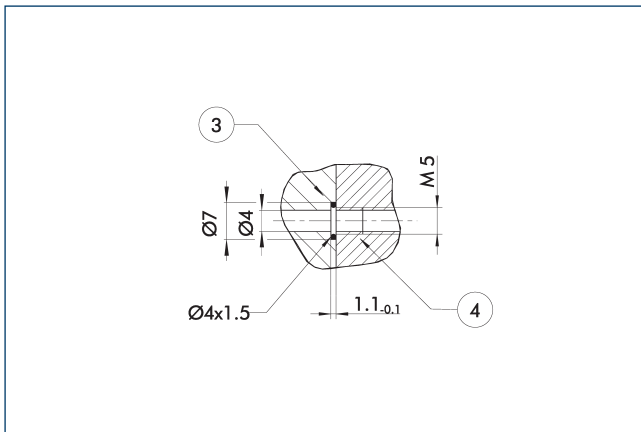


■ Permitted range

■ Inadmissible range

$L_{max}$  is equivalent to the maximum permitted finger length, see the technical data table.

### Hose-free direct connection M5

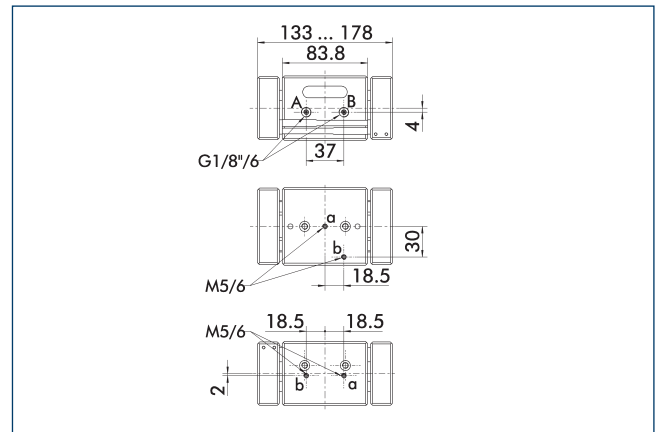


③ Adapter

④ Grippers

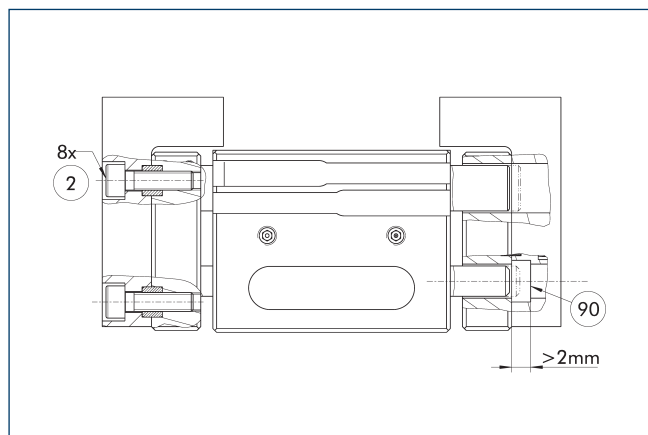
The direct connection is used for supplying compressed air without hoses. Instead, the pressure medium is fed through bore-holes in the mounting plate.

### Stroke variant PSH 32-2



The drawing shows changes in dimensions of the version with a different stroke compared to the version shown in the main view.

## Finger design

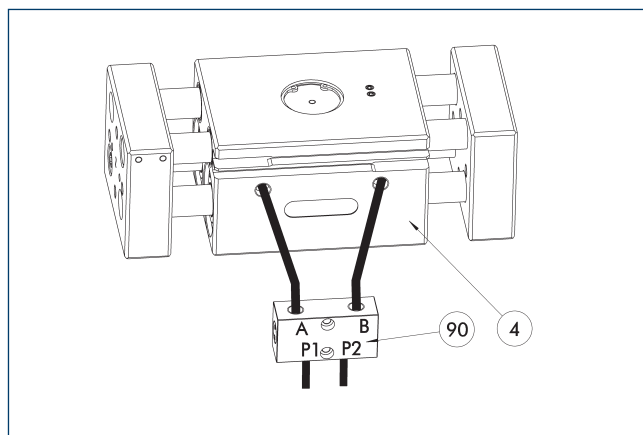


② Finger connection

⑨⑩ Recess

When closing the gripper completely, the piston rod can project beyond the end. If the entire closing stroke is required in the application, the recess is essential.

## SDV-P pressure maintenance valve



④ Grippers

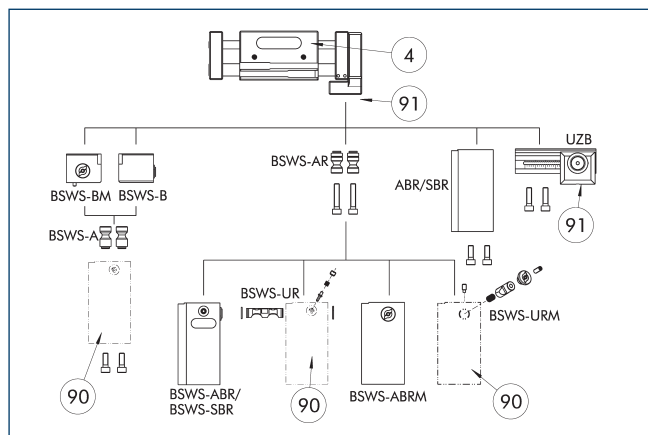
⑨⑩ SDV-P pressure maintenance valve

The SDV-P pressure maintenance valve ensures in emergency STOP situations that the pressure in the piston chamber of pneumatic gripper, swivel, linear, and quick-change modules is temporarily maintained.

Description	ID	Recommended hose diameter [mm]
Pressure maintenance valve		
SDV-P 04	0403130	6
Pressure maintenance valve with air bleed screw		
SDV-P 04-E	0300120	6

① In order to achieve the specified closing and opening time for each gripper variant, the recommended hose diameter must be used. The direct allocation of the respective variant of the gripper for the respective SDV-P can be found at [schunk.com](http://schunk.com).

## Intermediate jaw interface



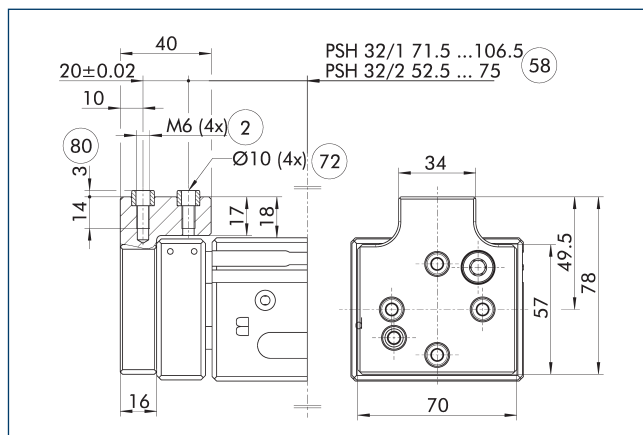
④ Grippers

⑨⑩ Customized gripper fingers

⑨⑩ Uniform screw connection pattern

By using the intermediate jaw, you have the possibility of directly connecting a wide range of accessories directly. This includes jaw quick-change systems, finger blanks, and universal intermediate jaws.

## ZBA PSH 32-100 intermediate jaw



② Finger connection

⑦② Fit for centering sleeves

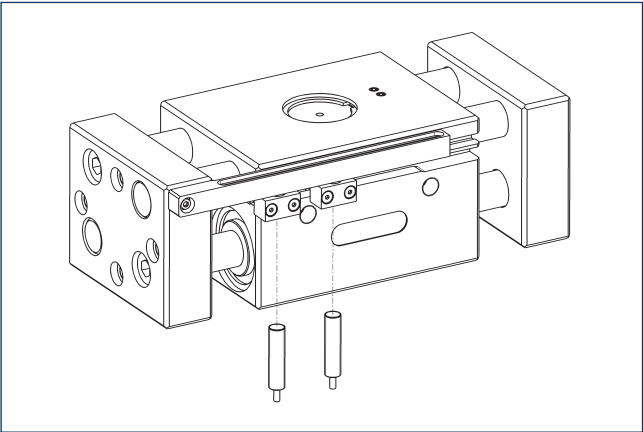
⑤⑧ Distance from center of gripper

⑧⑩ Depth of the centering sleeve hole in the counter part

Optionally intermediate jaws can be used, enabling direct connection and alignment of top jaws and various standard accessories in Z-direction.

Description	ID	Material	Finger interface	Scope of delivery
Intermediate jaw				
ZBA-PSH-32-100	0300226	Aluminum	PGN-plus 100	2

Inductive Proximity Switches

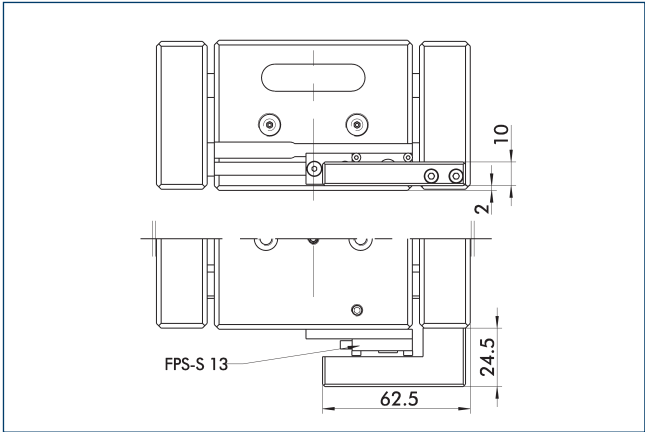


End position monitoring can be mounted with an attachment kit.

Description	ID	Often combined
Attachment kit for proximity switch		
HG-PSH 32	0300756	
Inductive proximity switches		
IN 80-S-M12	0301578	
IN 80-S-M8	0301478	●
IN-C 80-S-M8-PNP	0301475	
INK 80-S	0301550	
INK 80-SL	0301579	

① Two sensors (closer/S) are required for each unit and extension cables are available as an option. This attachment kit needs to be ordered optionally as an accessory. For sensor cables, note the minimum permissible bending radii. These are generally 35 mm.

Attachment kit for FPS



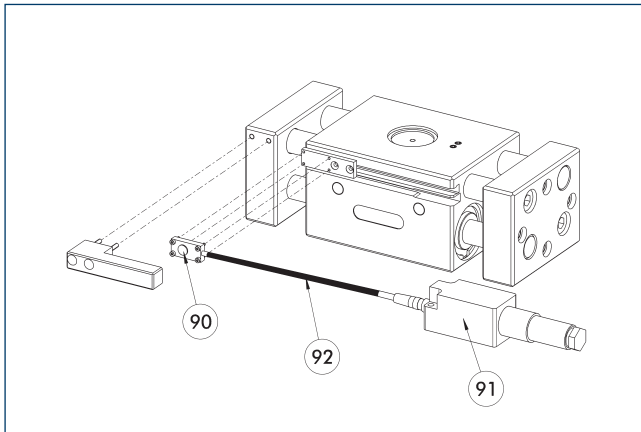
The following FPS position sensor can differentiate between five programmable areas or switching points for the stroke of a gripper, and can be used in connection with a PC as a measuring system.

Description	ID	
Attachment kit for FPS		
AS-FPS-PSH 32-2	0301738	

① This attachment kit needs to be ordered optionally as an accessory.



## Flexible position sensor



90 FPS-S sensor

92 Cable extension

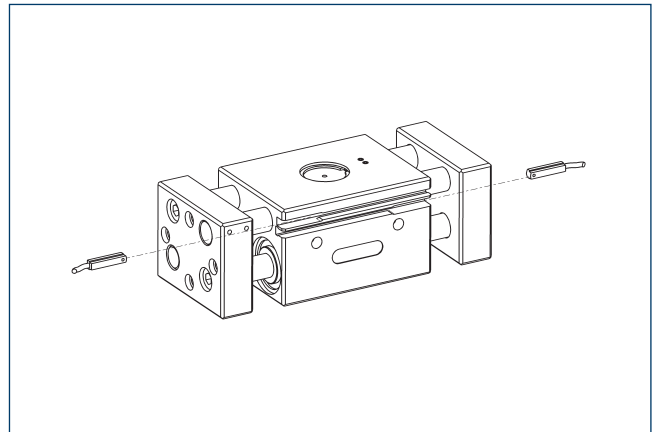
91 FPS-F5 evaluation electronic

Flexible position monitoring of up to five positions.

Description	ID	Often combined
Attachment kit for FPS		
AS-FPS-PSH 32-2	0301738	
Sensor		
FPS-S 13	0301705	
Evaluation electronics		
FPS-F5	0301805	●
Cable extension		
KV BG08-SG08 3P-0050	0301598	
KV BG08-SG08 3P-0100	0301599	

- ① When using an FPS system, an FPS sensor (FPS-S) as well as an electronic processor (FPS-F5 / F5 T) are required for each gripper as well as a mounting kit (AS), if listed. Cable extensions (KV) are optionally available – see catalog chapter “Accessories.”

## Electronic magnetic switch MMS



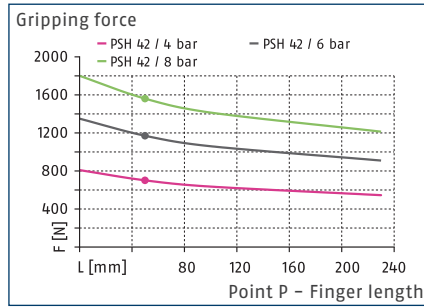
End position monitoring for mounting in the T-slot

Description	ID	Often combined
Electronic magnetic switch		
MMS 30-S-M12-PNP	0301571	
MMS 30-S-M8-PNP	0301471	●
MMSK 30-S-PNP	0301563	
Connection cables		
KA BG08-L 3P-0300-PNP	0301622	●
KA BG08-L 3P-0500-PNP	0301623	
KA BG12-L 3P-0500-PNP	30016369	
KA BW08-L 3P-0300-PNP	0301594	
KA BW08-L 3P-0500-PNP	0301502	
clip for plug/socket		
CLI-M12	0301464	
CLI-M8	0301463	
Cable extension		
KV BG12-SG12 3P-0030-PNP	0301999	
KV BG12-SG12 3P-0060-PNP	0301998	
KV BW08-SG08 3P-0030-PNP	0301495	
KV BW08-SG08 3P-0100-PNP	0301496	
KV BW08-SG08 3P-0200-PNP	0301497	●
KV BW12-SG12 3P-0030-PNP	0301595	
KV BW12-SG12 3P-0100-PNP	0301596	
KV BW12-SG12 3P-0200-PNP	0301597	
Sensor distributor		
V2-M8	0301775	●
V4-M8	0301746	
V8-M8	0301751	

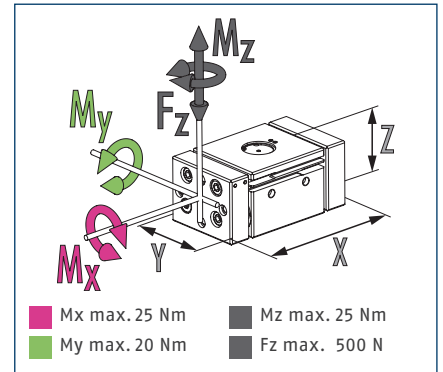
- ① Two sensors are required per unit for monitoring two positions. On option, extension cables and sensor distributors are available. Additional product variants of the sensor, and further information and technical data can be found in the catalog chapter sensor system.



### Gripping force



### Dimensions and maximum loads



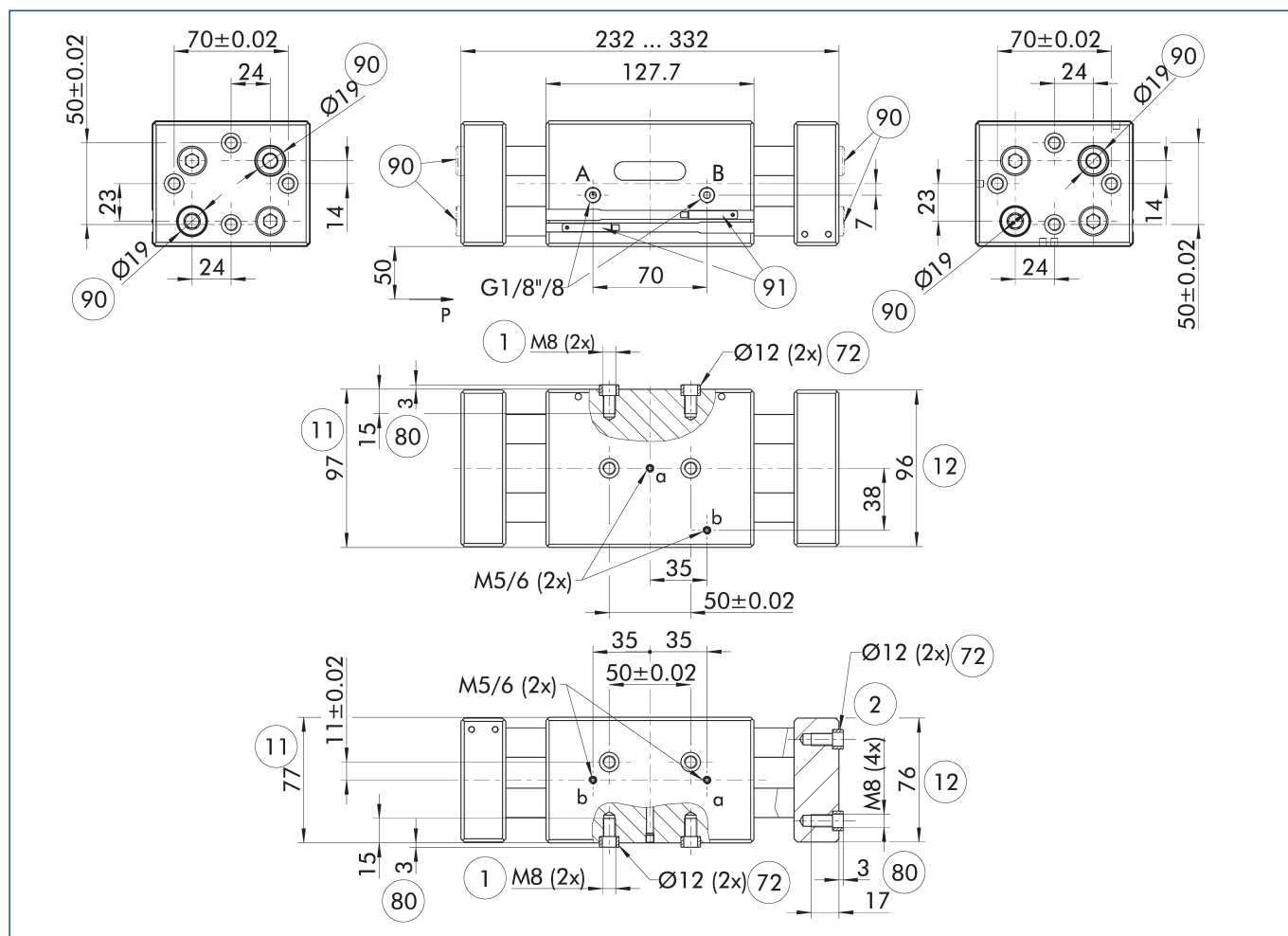
① The indicated moments and forces are statical values, apply for each base jaw and may appear simultaneously. Loads may additionally occur to the moment produced by the gripping force itself.

### Technical data

Description		PSH 42-100	PSH 42-1	PSH 42-2
ID		0302146	0302142	0302143
Stroke per jaw	[mm]	100	50	29
Closing/opening force	[N]	1170/1170	1170/1170	1170/1170
Weight	[kg]	6.7	4.65	3.9
Recommended workpiece weight	[kg]	6	6	6
Fluid consumption double stroke	[cm³]	510	255	148
Min./nom./max. operating pressure	[bar]	3/6/8	3/6/8	3/6/8
Closing/opening time	[s]	0.4/0.4	0.25/0.25	0.15/0.15
Max. permissible finger length	[mm]	230	230	230
Max. permissible mass per finger	[kg]	2.5	2.5	2.5
IP protection class		67	67	67
Min./max. ambient temperature	[°C]	5/90	5/90	5/90
Repeat accuracy	[mm]	0.05	0.05	0.05
Dimensions X x Y x Z	[mm]	326 x 97 x 77	232 x 97 x 77	168 x 97 x 77
<b>Options and their characteristics</b>				
High-temperature version		39302146	39302142	39302143
Min./max. ambient temperature	[°C]	5/130	5/130	5/130

① It may take a few 100 gripping cycles until the full gripping force (as indicated in the data table) will be available.

## Main view PSH 42-1



The drawing shows the gripper in the basic version with closed jaws, without dimensional consideration of the options described below.

- ① The SDV-P pressure maintenance valve can be used as a gripping force maintenance device (see catalog section on accessories).

A, a Main / direct connection, gripper opening

B, b Main / direct connection, gripper closing

① Gripper connection

② Finger connection

⑪ Housing

⑫ Jaw

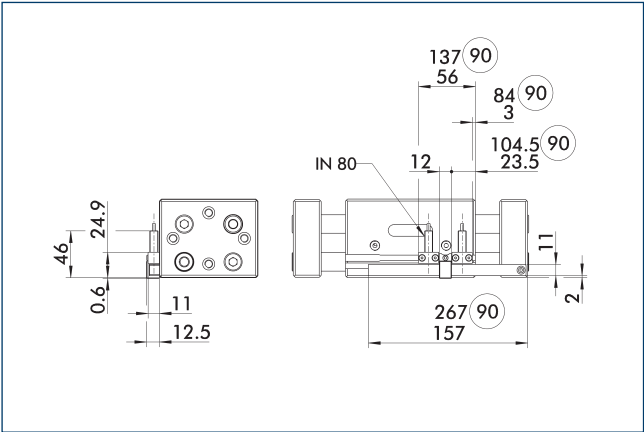
⑦② Fit for centering sleeves

⑧① Depth of the centering sleeve hole in the counter part

⑨① Cut-out for the finger design

⑨① MMS 30... sensor

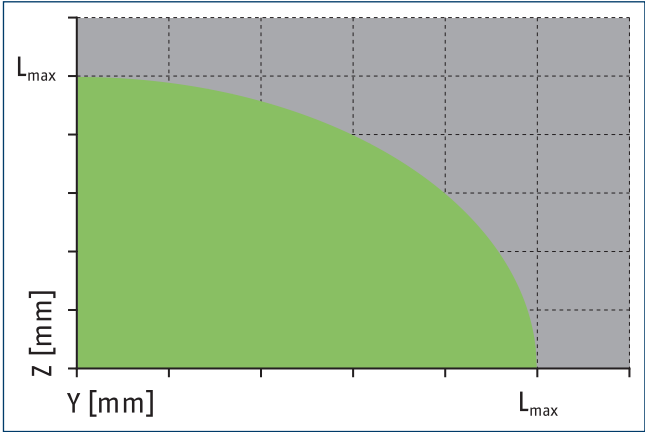
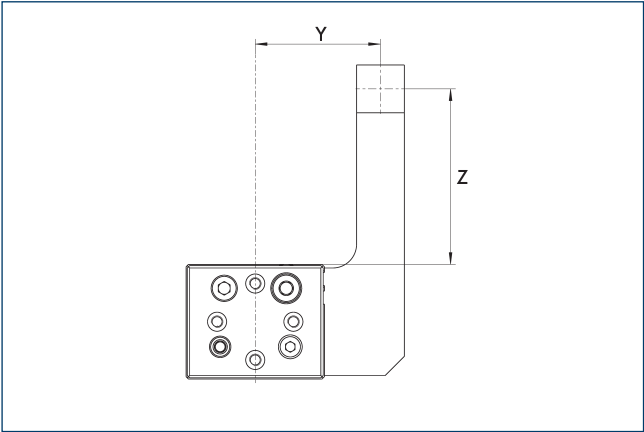
Attachment kit for proximity switch



The drawing shows the gripper in the basic version with closed jaws, without dimensional consideration of the options described below.

① The SDV-P pressure maintenance valve can be used as a gripping force maintenance device (see catalog section on accessories).

Maximum permitted finger projection



■ Permitted range      ■ Inadmissible range

Lmax is equivalent to the maximum permitted finger length, see the technical data table.

Technical drawing of a mechanical part, likely a bush or sleeve, showing dimensions and callouts:

- Callout 3:** Points to the outer cylindrical surface.
- Callout 4:** Points to the inner cylindrical surface.
- Dimensions:**
  - Outer diameter:  $\varnothing 7$
  - Inner diameter:  $\varnothing 4$
  - Length:  $1.1_{-0.1}$
  - Threaded section length:  $M 5$
- Feature:** A threaded section (M 5) is indicated on the right side of the part.

#### ④ Grippers

The direct connection is used for supplying compressed air without hoses. Instead, the pressure medium is fed through bore-holes in the mounting plate.

The drawing shows changes in dimensions of the version with a different stroke compared to the version shown in the main view.

Technical drawing showing the front and top views of a rectangular plate with mounting holes and dimensions.

**Front View (Top):**

- Overall width: 168 ... 226
- Inner width: 106.3
- Height: 7
- Mounting holes: A and B
- Distance between mounting holes: 48
- Thread specification: G1/8" / 8

**Top View (Bottom):**

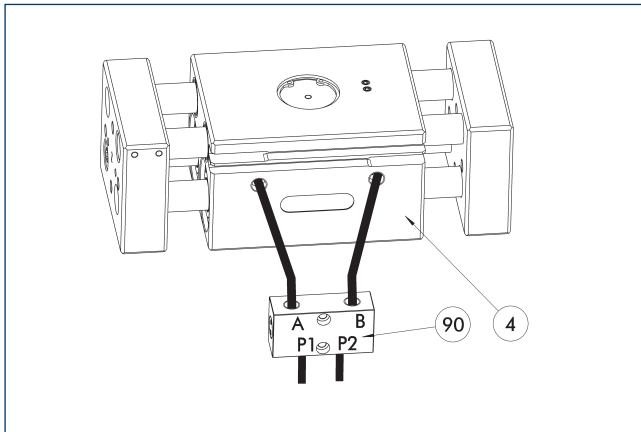
- Overall width: 106.3
- Overall height: 38
- Mounting holes: a and b
- Distance between mounting holes: 24
- Thread specification: M5/6

The drawing shows changes in dimensions of the version with a different stroke compared to the version shown in the main view.

90 Recess

When closing the gripper completely, the piston rod can project beyond the end. If the entire closing stroke is required in the application, the recess is essential.

## SDV-P pressure maintenance valve



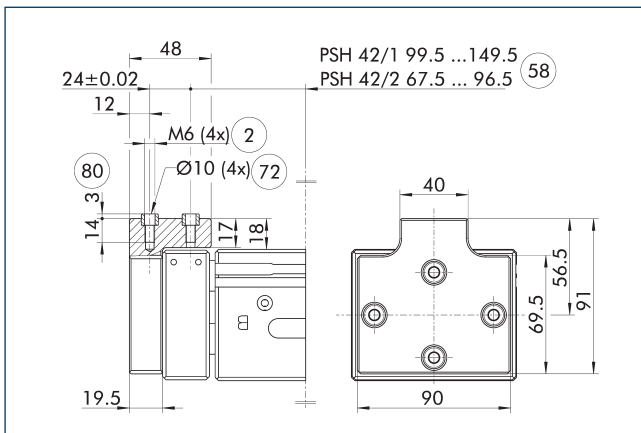
- ④ Grippers

The SDV-P pressure maintenance valve ensures in emergency STOP situations that the pressure in the piston chamber of pneumatic gripper, swivel, linear, and quick-change modules is temporarily maintained.

Description	ID	Recommended hose diameter [mm]
Pressure maintenance valve		
SDV-P 07	0403131	8
Pressure maintenance valve with air bleed screw		
SDV-P 07-E	0300121	8

- ① In order to achieve the specified closing and opening time for each gripper variant, the recommended hose diameter must be used. The direct allocation of the respective variant of the gripper for the respective SDV-P can be found at [schunk.com](http://schunk.com).

### ZBA PSH 42-125 intermediate jaw

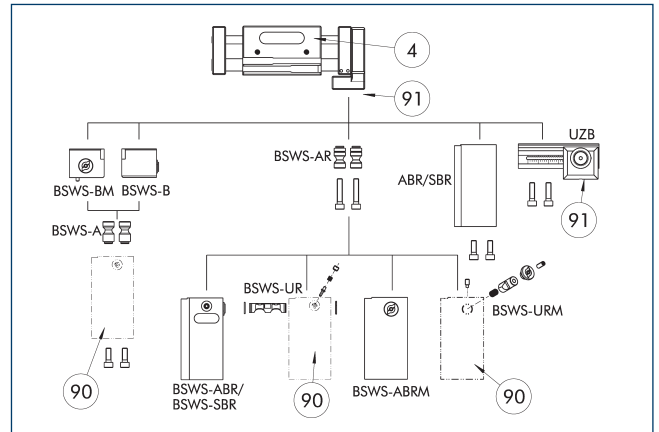


- |                                    |   |
|------------------------------------|---|
| ② Finger connection                | ⑦② Fit for centering sleeves                              |
| ⑤⑧ Distance from center of gripper | ⑧⑩ Depth of the centering sleeve hole in the counter part |

Optionally intermediate jaws can be used, enabling direct connection and alignment of top jaws and various standard accessories in Z-direction.

Description	ID	Material	Finger interface	Scope of delivery
Intermediate jaw				
ZBA-PSH-42-125	0300227	Aluminum	PGN-plus 125	2

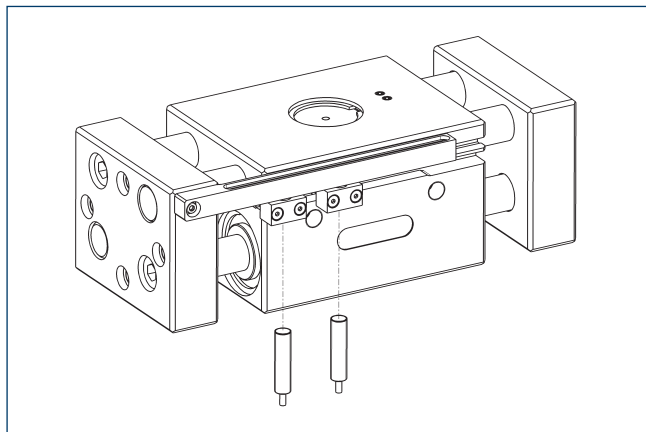
### Intermediate jaw interface



- ④ Grippers  
⑨⑩ Uniform screw connection pattern
- ⑨① Customized gripper fingers

By using the intermediate jaw, you have the possibility of directly connecting a wide range of accessories directly. This includes jaw quick-change systems, finger blanks, and universal intermediate jaws.

## Inductive Proximity Switches

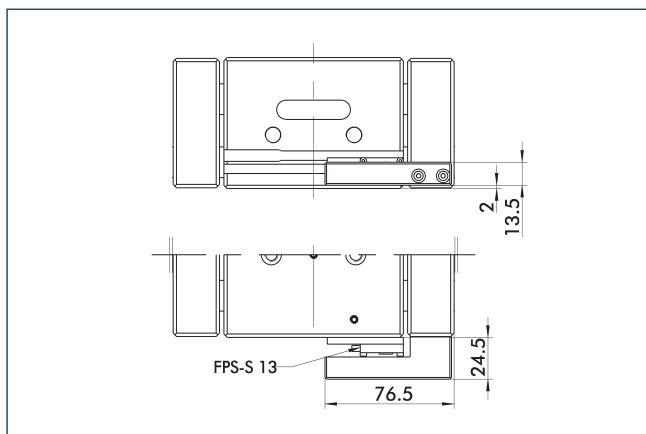


End position monitoring can be mounted with an attachment kit.

Description	ID	Often combined
Attachment kit for proximity switch		
HG-PSH 42	0300757	
HG-PSH 42-100	0301771	
Inductive proximity switches		
IN 80-S-M12	0301578	
IN 80-S-M8	0301478	●
INK 80-S	0301550	

① Two sensors (closer/S) are required for each unit and extension cables are available as an option. This attachment kit needs to be ordered optionally as an accessory. For sensor cables, note the minimum permissible bending radii. These are generally 35 mm.

## Attachment kit for FPS

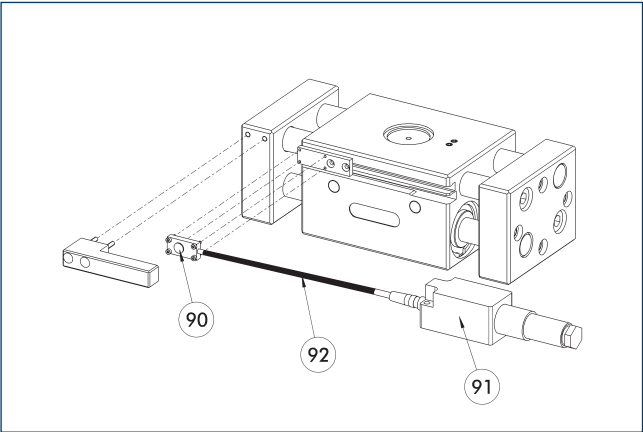


The following FPS position sensor can differentiate between five programmable areas or switching points for the stroke of a gripper, and can be used in connection with a PC as a measuring system.

Description	ID	
Attachment kit for FPS		
AS-FPS-PSH 42-2	0301739	

① This attachment kit needs to be ordered optionally as an accessory.

Flexible position sensor



- 90 FPS-S sensor
- 92 Cable extension
- 91 FPS-F5 evaluation electronic

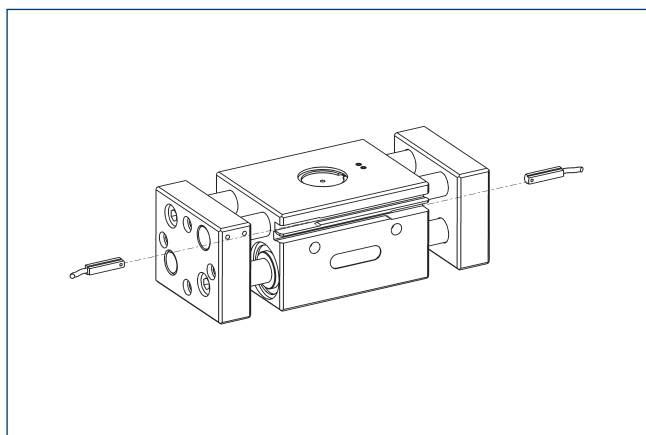
Flexible position monitoring of up to five positions.

Description	ID	Often combined
Attachment kit for FPS		
AS-FPS-PSH 42-2	0301739	
Sensor		
FPS-S 13	0301705	
Evaluation electronics		
FPS-F5	0301805	●
Cable extension		
KV BG08-SG08 3P-0050	0301598	
KV BG08-SG08 3P-0100	0301599	

- ⓘ When using an FPS system, an FPS sensor (FPS-S) as well as an electronic processor (FPS-F5 / F5 T) are required for each gripper as well as a mounting kit (AS), if listed. Cable extensions (KV) are optionally available – see catalog chapter “Accessories.”



## Electronic magnetic switch MMS



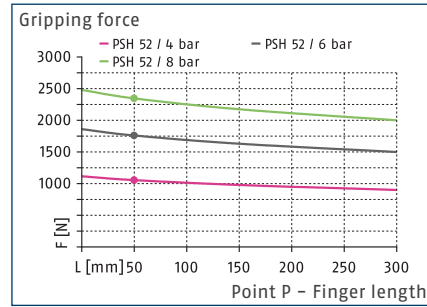
End position monitoring for mounting in the T-slot

Description	ID	Often combined
Electronic magnetic switch		
MMS 30-S-M12-PNP	0301571	
MMS 30-S-M8-PNP	0301471	●
MMSK 30-S-PNP	0301563	
Connection cables		
KA BG08-L 3P-0300-PNP	0301622	●
KA BG08-L 3P-0500-PNP	0301623	
KA BG12-L 3P-0500-PNP	30016369	
KA BW08-L 3P-0300-PNP	0301594	
KA BW08-L 3P-0500-PNP	0301502	
clip for plug/socket		
CLI-M12	0301464	
CLI-M8	0301463	
Cable extension		
KV BG12-SG12 3P-0030-PNP	0301999	
KV BG12-SG12 3P-0060-PNP	0301998	
KV BW08-SG08 3P-0030-PNP	0301495	
KV BW08-SG08 3P-0100-PNP	0301496	
KV BW08-SG08 3P-0200-PNP	0301497	●
KV BW12-SG12 3P-0030-PNP	0301595	
KV BW12-SG12 3P-0100-PNP	0301596	
KV BW12-SG12 3P-0200-PNP	0301597	
Sensor distributor		
V2-M8	0301775	●
V4-M8	0301746	
V8-M8	0301751	

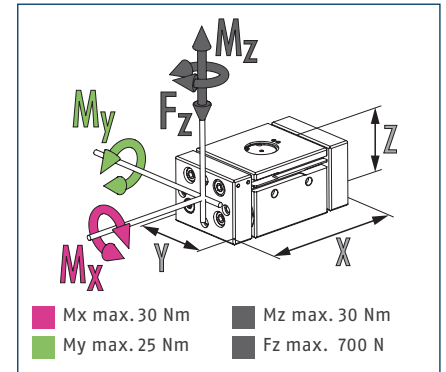
- ① Two sensors are required per unit for monitoring two positions. On option, extension cables and sensor distributors are available. Additional product variants of the sensor, and further information and technical data can be found in the catalog chapter sensor system.



### Gripping force



### Dimensions and maximum loads



① The indicated moments and forces are statical values, apply for each base jaw and may appear simultaneously. Loads may additionally occur to the moment produced by the gripping force itself.

### Technical data

Description		PSH 52-1
ID		0302152
Stroke per jaw	[mm]	64
Closing/opening force	[N]	1760/1760
Weight	[kg]	8.05
Recommended workpiece weight	[kg]	8.8
Fluid consumption double stroke	[cm³]	504
Min./nom./max. operating pressure	[bar]	3/6/8
Closing/opening time	[s]	0.4/0.4
Max. permissible finger length	[mm]	300
Max. permissible mass per finger	[kg]	3.5
IP protection class		67
Min./max. ambient temperature	[°C]	5/90
Repeat accuracy	[mm]	0.05
Dimensions X x Y x Z	[mm]	296 x 119 x 92
<b>Options and their characteristics</b>		
High-temperature version		39302152
Min./max. ambient temperature	[°C]	5/130

① It may take a few 100 gripping cycles until the full gripping force (as indicated in the data table) will be available.

Technical drawing of a 2x2 valve assembly, showing three views: front, top, and side. The drawing includes dimensions and callouts for various components.

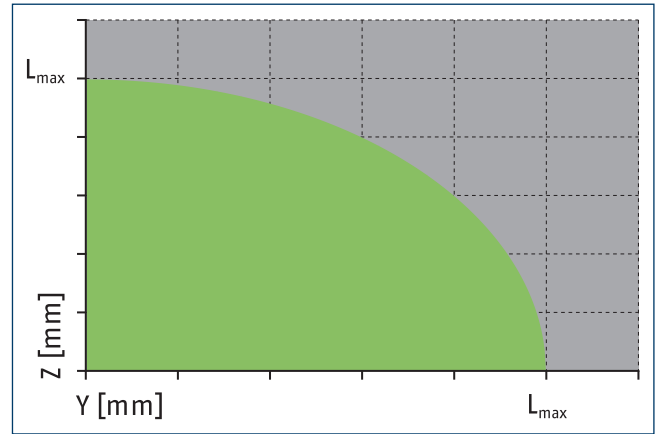
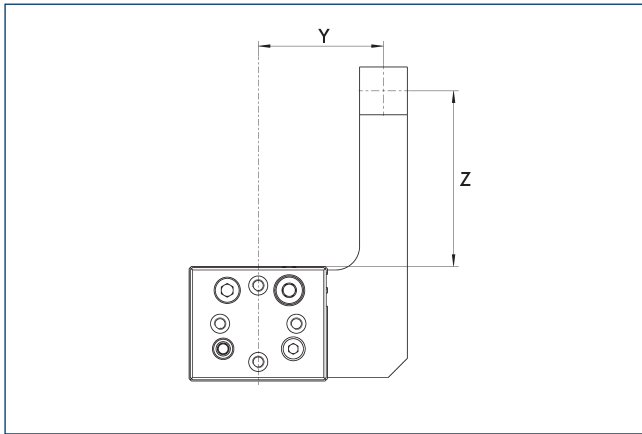
**Front View (Top):** Shows the main body with dimensions 80±0.02, 30, 16.5, 32, 28, 64±0.02, and 90. Callouts include Ø21, 90, and 91.

**Top View (Middle):** Shows the top of the assembly with dimensions 296 ... 424, 162.2, 49, 90, 9, 64±0.02, 119, 20, 4, 80, 12, 118, 12, 64±0.02, 45, 45, 13.5±0.02, 92, 20, 4, 80, 21, 91, 12, 4, 80, 21. Callouts include 1 M10 (2x), Ø14 (2x) 72, M5/6, a, b, 2, Ø14 (2x) 72, M10 (4x), and 90.

**Side View (Bottom):** Shows the side of the assembly with dimensions 80±0.02, 30, 16.5, 32, 28, 64±0.02, and 90. Callouts include Ø21, 90, and 91.

91 MMS 30... sensor

### Maximum permitted finger projection

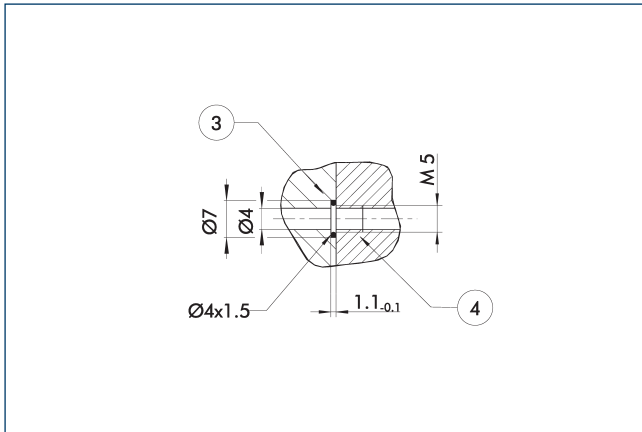


■ Permitted range

■ Inadmissible range

$L_{max}$  is equivalent to the maximum permitted finger length, see the technical data table.

### Hose-free direct connection M5

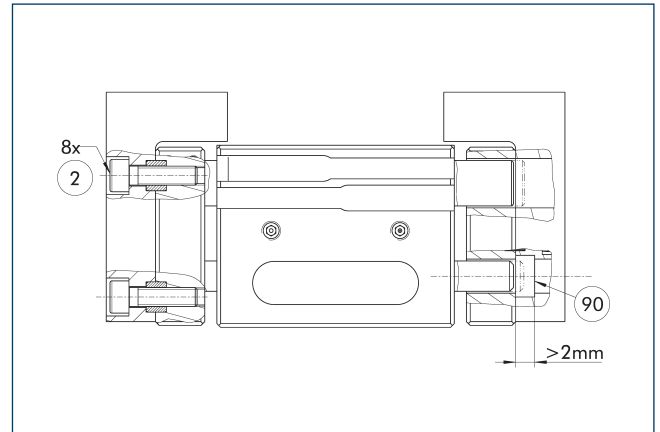


③ Adapter

④ Grippers

The direct connection is used for supplying compressed air without hoses. Instead, the pressure medium is fed through bore-holes in the mounting plate.

### Finger design

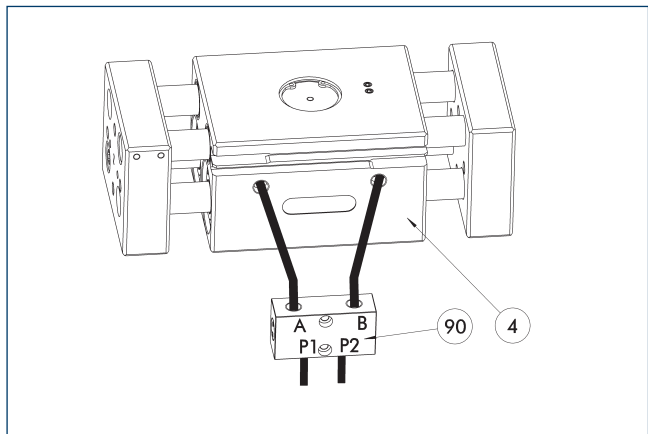


② Finger connection

⑨⑩ Recess

When closing the gripper completely, the piston rod can project beyond the end. If the entire closing stroke is required in the application, the recess is essential.

## SDV-P pressure maintenance valve



④ Grippers

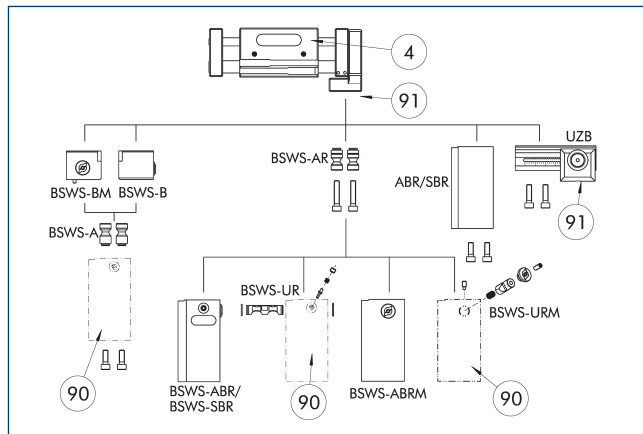
⑨⑩ SDV-P pressure maintenance valve

The SDV-P pressure maintenance valve ensures in emergency STOP situations that the pressure in the piston chamber of pneumatic gripper, swivel, linear, and quick-change modules is temporarily maintained.

Description	ID	Recommended hose diameter [mm]
Pressure maintenance valve		
SDV-P 07	0403131	8
Pressure maintenance valve with air bleed screw		
SDV-P 07-E	0300121	8

① In order to achieve the specified closing and opening time for each gripper variant, the recommended hose diameter must be used. The direct allocation of the respective variant of the gripper for the respective SDV-P can be found at [schunk.com](http://schunk.com).

## Intermediate jaw interface



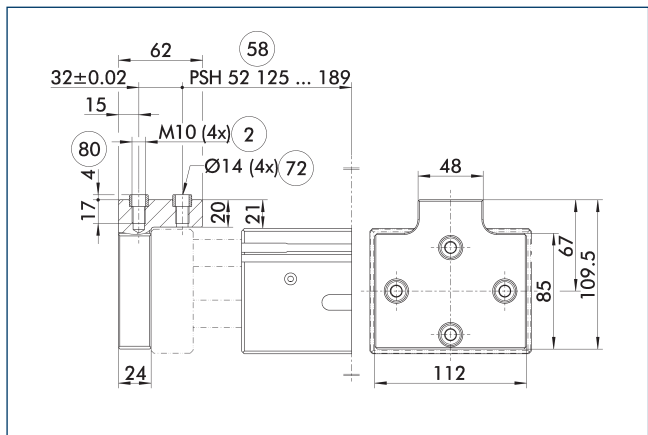
④ Grippers

⑨① Customized gripper fingers

⑨⑩ Uniform screw connection pattern

By using the intermediate jaw, you have the possibility of directly connecting a wide range of accessories directly. This includes jaw quick-change systems, finger blanks, and universal intermediate jaws.

## ZBA PSH 52-160 intermediate jaw



② Finger connection

⑦② Fit for centering sleeves

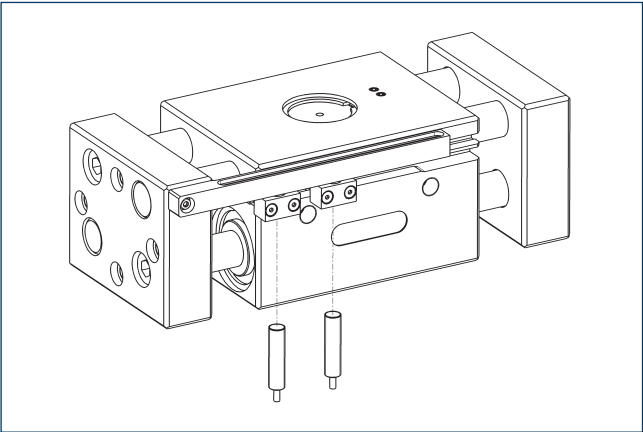
⑤⑧ Distance from center of gripper

⑧⑩ Depth of the centering sleeve hole in the counter part

Optionally intermediate jaws can be used, enabling direct connection and alignment of top jaws and various standard accessories in Z-direction.

Description	ID	Material	Finger interface	Scope of delivery
Intermediate jaw				
ZBA-PSH-52-160	0300228	Aluminum	PGN-plus 160	2

Inductive Proximity Switches

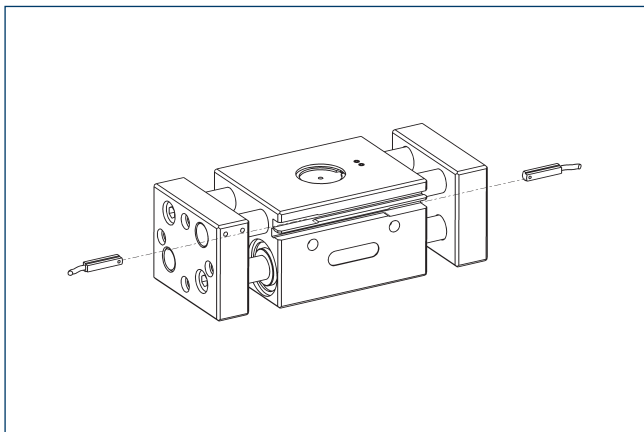


End position monitoring can be mounted with an attachment kit.

Description	ID	Often combined
Attachment kit for proximity switch		
HG-PSH 52	0300759	
Inductive proximity switches		
IN 80-S-M12	0301578	
IN 80-S-M8	0301478	●
IN-C 80-S-M8-PNP	0301475	
INK 80-S	0301550	
INK 80-SL	0301579	

❗ Two sensors (closer/S) are required for each unit and extension cables are available as an option. This attachment kit needs to be ordered optionally as an accessory. For sensor cables, note the minimum permissible bending radii. These are generally 35 mm.

## Electronic magnetic switch MMS



End position monitoring for mounting in the T-slot

Description	ID	Often combined
Electronic magnetic switch		
MMS 30-S-M12-PNP	0301571	
MMS 30-S-M8-PNP	0301471	•
MMSK 30-S-PNP	0301563	
Connection cables		
KA BG08-L 3P-0300-PNP	0301622	•
KA BG08-L 3P-0500-PNP	0301623	
KA BG12-L 3P-0500-PNP	30016369	
KA BW08-L 3P-0300-PNP	0301594	
KA BW08-L 3P-0500-PNP	0301502	
clip for plug/socket		
CLI-M12	0301464	
CLI-M8	0301463	
Cable extension		
KV BG12-SG12 3P-0030-PNP	0301999	
KV BG12-SG12 3P-0060-PNP	0301998	
KV BW08-SG08 3P-0030-PNP	0301495	
KV BW08-SG08 3P-0100-PNP	0301496	
KV BW08-SG08 3P-0200-PNP	0301497	•
KV BW12-SG12 3P-0030-PNP	0301595	
KV BW12-SG12 3P-0100-PNP	0301596	
KV BW12-SG12 3P-0200-PNP	0301597	
Sensor distributor		
V2-M8	0301775	•
V4-M8	0301746	
V8-M8	0301751	

- ① Two sensors are required per unit for monitoring two positions. On option, extension cables and sensor distributors are available. Additional product variants of the sensor, and further information and technical data can be found in the catalog chapter sensor system.



**SCHUNK GmbH & Co. KG**  
**Spann- und Greiftechnik**

Bahnhofstr. 106 - 134  
D-74348 Lauffen/Neckar  
Tel. +49-7133-103-0  
Fax +49-7133-103-2399  
[info@de.schunk.com](mailto:info@de.schunk.com)  
[schunk.com](http://schunk.com)

Folgen Sie uns | *Follow us*

